

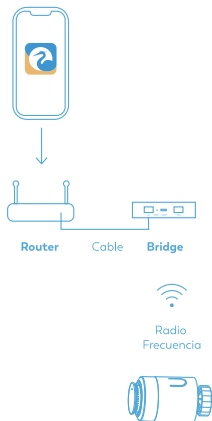
## EN SMART THERMOSTAT RADIATOR

### Tools and Equipment Needed for Installation

- A heating radiator with thermostatic valve.
- A radiator adapter. If your valve adapter is not included, please, contact us at [customer@garza.es](mailto:customer@garza.es)
- A Zigbee internet Bridge (Included within Starter Kit)
- 2 AA Batteries (Included)

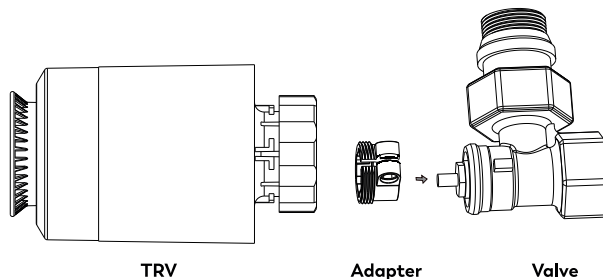
### How does it work?

- The Starter Kit includes the Garza Internet Bridge, which is connected to your router. This connects your Smart Radiator Thermostat to the internet.



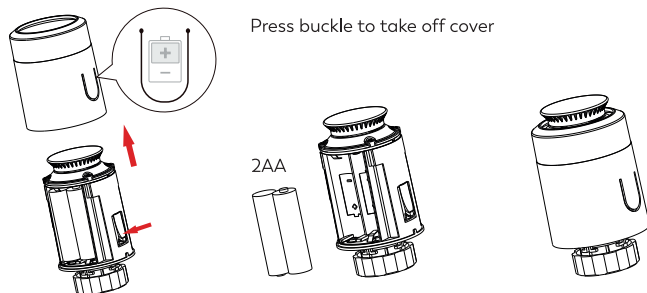
- You can control your thermostat through Garza App from anywhere. Also you can sync with Alexa or Ok Google

## THERMOSTAT INSTALLATION

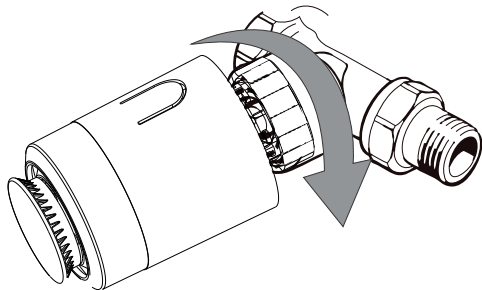


(pick the one that adapts to your valve)

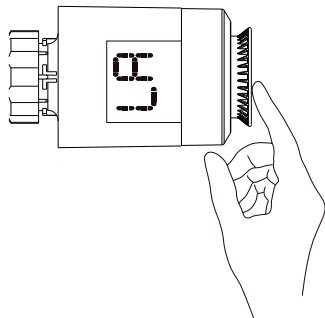
### 1. Put battery in battery compartment



## 2. Install TRV tighten the copper ring



3. Press button on rotatory plate lightly, it would flash "LA" TRV will match valve stroker, if match succesfully, will active initial setting.

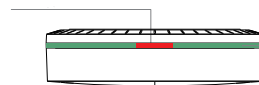


## BRIDGE INSTALLATION (INCLUDED IN STARTER KIT)

THE STARTER KIT INCLUDES THE GARZA INTERNET BRIDGE, WHICH IS CONNECTED TO YOUR ROUTER. THIS CONNECTS YOUR SMART RADIATOR THERMOSTAT TO THE INTERNET. THE BRIDGE IS NEEDED FOR YOUR THERMOSTAT BE SET UP AND FUNCTIONAL

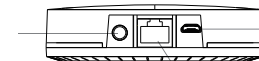
1. Conect your Bridge to the power supply via USB
2. Conect it's ethernet cable to your router

Status  
indicator



Pairing  
indicator

Reset  
button



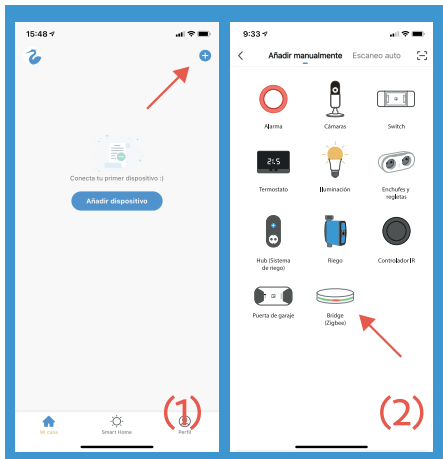
USB power

Ethernet connection

## SYNC THE BRIDGE

Download Garza App in the APP Store or Play Store.

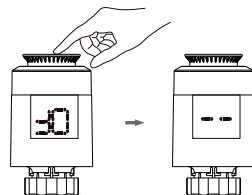
- (1) Open the app from the menu "My Home" (available in multilingual soon). Press (+) in the upper right corner
- (2) Choose "Bridge Zigbee"
- (3) Follow the instructions in the App.



## THERMOSTAT SET UP

From the App menu "My home" tap in your bridge device.  
Now from your Thermostat:

- (1) For thermostat: in "OF" state.
- (2) Long press rotatory plate until the screen show "--".
- (3) Click "Add subdevice" to enter the device list.
- (4) Click "Led already blink". Search device wait a few seconds until the TRV appears "PA"
- (5) Select the type of device you want to add (TRV - Thermostat) and click done



*\* If you have any difficulties, do not hesitate to contact [customer@garza.es](mailto:customer@garza.es) or visit our knowledge portal at [customer.garza.es](https://customer.garza.es)*

After your thermostat is added succesfully, we can control the device through the Garza APP. The easiest way to control the heater temperature is ▼ ▲